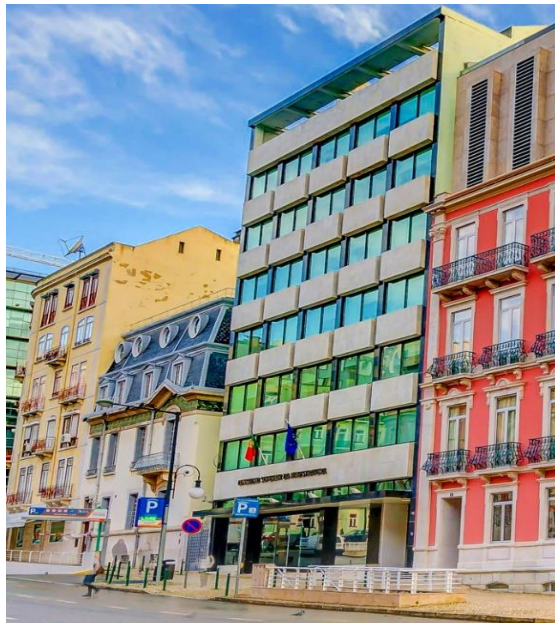




LISBON OFFICE INVESTMENT TRANSACTIONS

Acquisitions of over € 60,000,000 in 2017



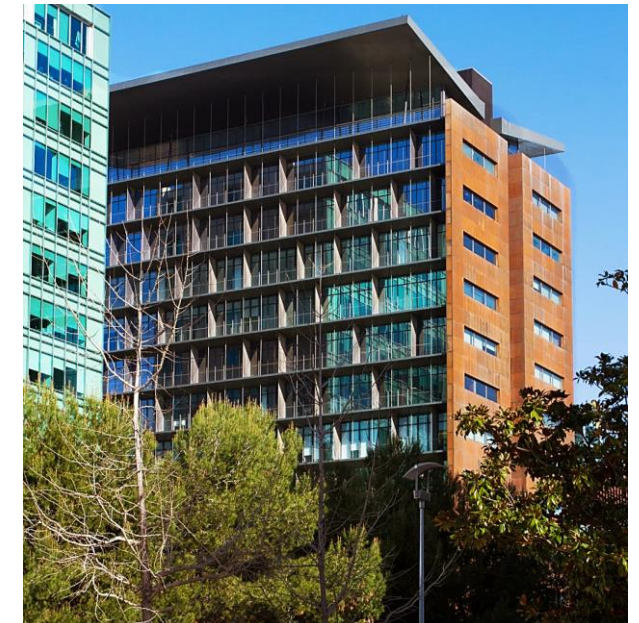
MOUZINHO DA SILVEIRA, 10

Boutique CBD 1 office asset fully let to the Portuguese Council of Magistrates. Acquired on behalf of a private client of Guggenheim Wealth Management.



AGEAS HQ

Prime Zone 5 office asset fully let to Ageas Seguros. Acquired on behalf of Zurich Insurance from a private Brazilian investor.



CENTRAL OFFICE

Prime, multi-let office building in the heart of Zone 5. Tenants include Adidas and Red Bull. Acquired on behalf of Merlin Properties.

CONTACT US

BILL JUDGE
+44 (0)789 9066 343
bj@rpeurope.com

TIM SECONDE
+351 91 728 8894
ts@rpeurope.com

STEVEN WEAVING
+44 (0)754 0969 757
sw@rpeurope.com